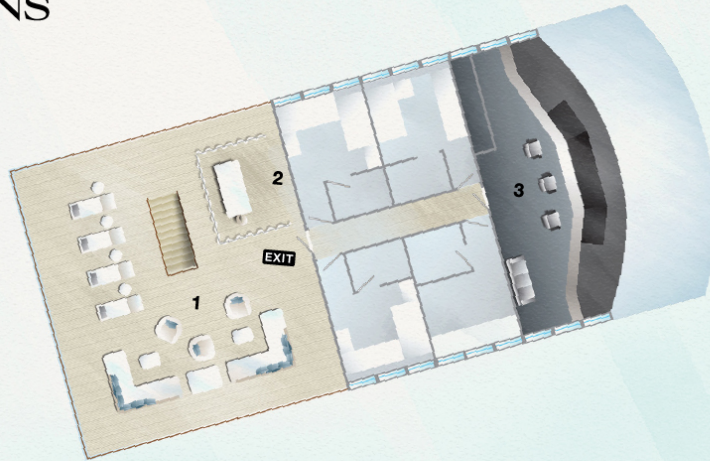




# FOUR SEASONS

EXPLORER  
PALAU

## DECK PLANS



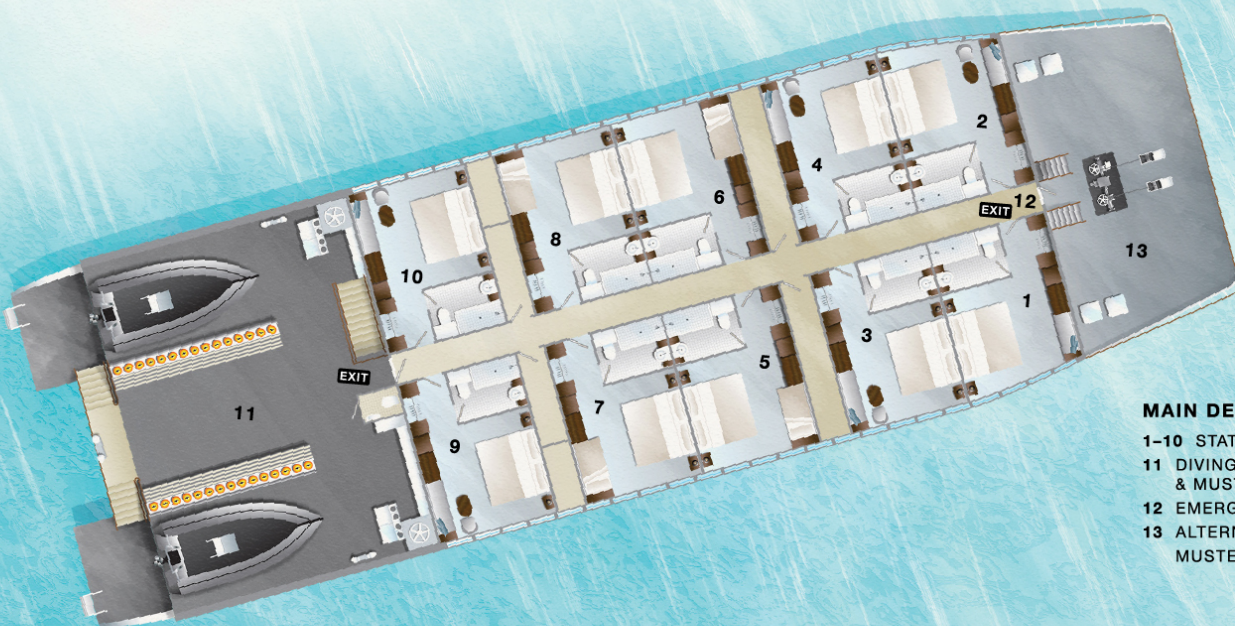
### TOP DECK

- 1 SUN DECK
- 2 MASSAGE AREA
- 3 BRIDGE



### UPPER DECK

- 1 ALFRESCO DINING DECK
- 2 BAR
- 3 GALLEY
- 4 INDOOR DINING
- 5 LOUNGE
- 6 EXPLORER SUITE



### MAIN DECK

- 1-10 STATE ROOMS
- 11 DIVING AND RECREATION & MUSTER STATION
- 12 EMERGENCY EXIT
- 13 ALTERNATIVE MUSTER STATION